



ADAM SMITH  

---

PANMURE  
HOUSE



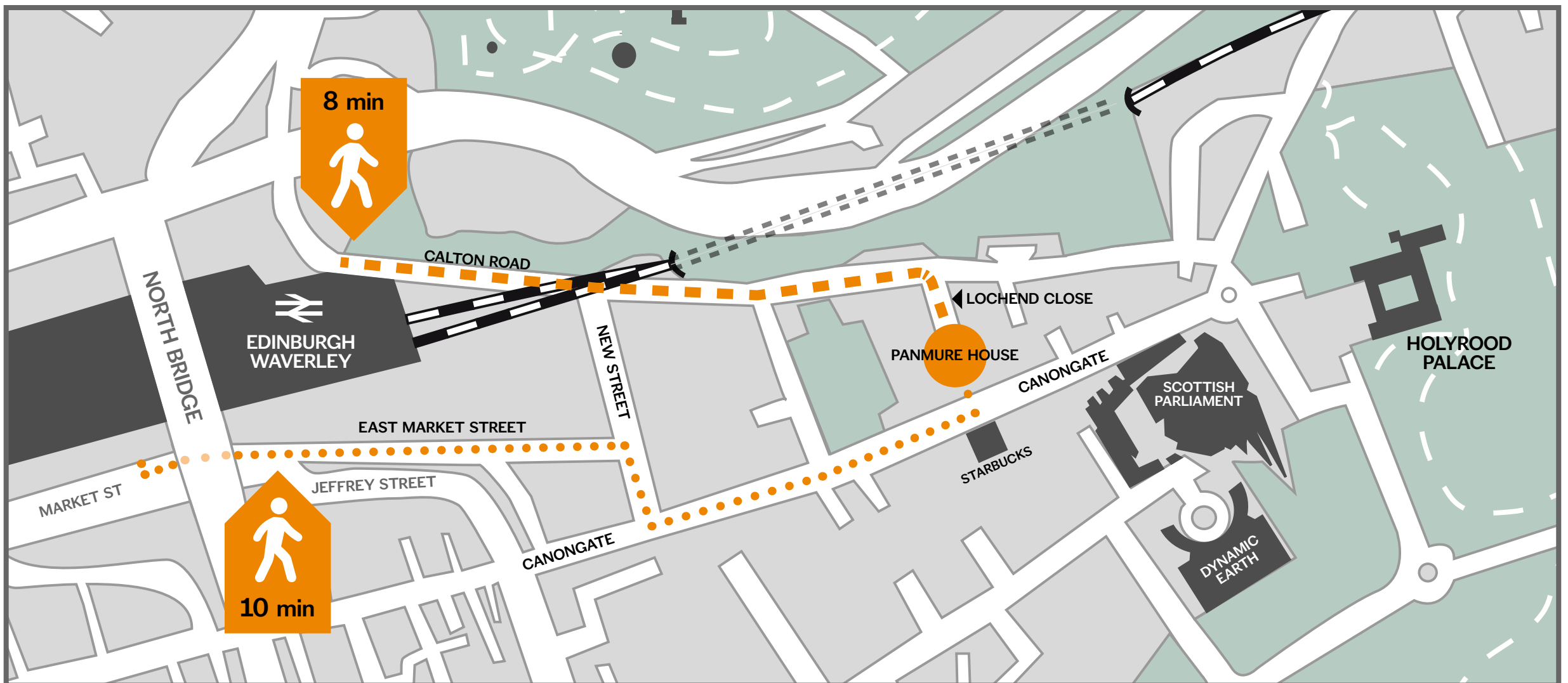
HOW TO REACH  
ADAM SMITH'S  
PANMURE HOUSE

We are situated just off the Royal Mile and in close proximity to the Scottish Parliament. Our address is:

Panmure House, 4 Lochend Close, Edinburgh EH8 8BL



# DIRECTIONS FROM EDINBURGH WAVERLEY TRAIN STATION BY FOOT



## QUICKEST WALKING ROUTE VIA **CALTON ROAD** EXIT

- Immediately turn right onto Calton Road towards Holyrood Palace and walk approximately 0.4 miles.
- Continue past Panmure Court Student Roost buildings and turn immediately right onto Lochend Close.
- Walk to the top of Lochend Close, turn right and Panmure House will be directly in front of you.



## ALTERNATIVE ROUTE VIA MARKET STREET EXIT

- Immediately turn left onto Market Street towards Jeffrey Street and walk approximately 0.2 miles.
- Turn right onto New Street and walk up the short hill.
- Turn left onto the Canongate Royal Mile and walk approximately 0.3 miles until you reach the entrance for Lochend Close. For visual reference, Starbucks is located on the opposite side of the street.

**Please note:** you will pass a sign for the entrance to Panmure Close. This is not a route to Panmure House.

- Walk through Lochend Close. This leads you directly into a courtyard in which Panmure House is located.

---

## TAXI TRAVEL

UBER is recommended however there are alternative taxi companies listed below:

- City Cabs: 0131 228 1211
  - Central Taxis: 0131 229 2468
-



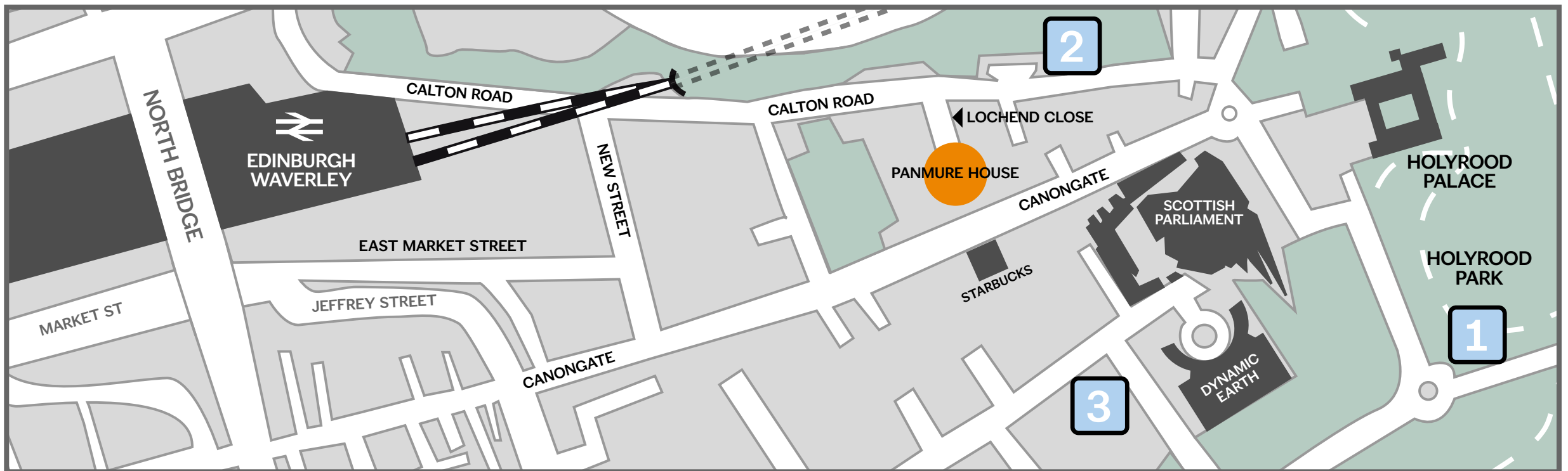
## TRAM TRAVEL

Edinburgh Trams run every 7 minutes and travel between Edinburgh Airport and Newhaven. The nearest tram stop is Picardy Place, a 15 minute walk to Panmure House via Calton Road.

More information can be found on the [Edinburgh Trams website](#).

---

## PARKING INFORMATION



Parking on Lochend Close is reserved for permit holders only and closely monitored by parking attendants. There is no parking available for visitors to Panmure House.

If you visit us by car, we recommend the following parking options:

- 1 Holyrood Park (Broad Pavement) Car Park**  
Visit [Historic Environment Scotland](#) for prices and information.
- 2 Calton Road Pay and Display on-street parking**  
Visit the [City of Edinburgh Council](#) website for prices and information.
- 3 Dynamic Earth 24-hour Car Park**  
Visit [Dynamic Earth](#) for prices and information.

We recommend you explore all suggested parking options as distance and prices vary.

---

## ENTRANCE



Lochend Close, as viewed from Calton Road. Panmure House is situated top right.



Take the stairs down into the main entrance and ring the intercom on the left-hand side.

---